



Husser Community Center Capital Campaign

This project is targeted toward restoring the Husser Community Center to being a functional public building.



From Schoolhouse to Community Center



Our History

In 1921 the Husser School was built to accommodate the education of a fast-growing community. The first of its kind in the area, the two-room school remained open for over 20 years. In 1929 the Husser Community Organization was formed as a community outreach program sponsored by the LSU AgCenter. In 1946, the Husser Community Organization finally found itself a home when it purchased the school at public auction. With the highest bid of \$75.00, the Husser School officially became known as the Husser Community Center!

Our Plans

We plan to re-open the building for regular usage, including rentals and community events. This will provide a local event center for the citizens of Husser, right here in their own backyard!

Phase 1 - Exterior

1. Foundation – Elevate and Level **\$20,000**
2. Roof Replacement **\$20,000**
3. Siding / Doors / Windows / Porch **\$10,000**

Phase 1 is the most important part of the project! The steps outlined in Phase 1 will guarantee the building is leveled, protected from the elements, and well-sealed so as to prevent further deterioration.



Phase 2 – Interior

4. Floors / Ceiling / Insulation **\$15,000**
5. Electrical **\$8,000**
6. HVAC **\$15,000**

Phase 2 will be the “cosmetic stage”, refinishing the floors, the ceiling, and insulating the walls to keep the building comfortable for its occupants. Phase 2 also consists of redoing the electrical components, and the air conditioning system. At the end of this phase, the building will be functional, less a restroom.



Phase 3 - Additions

7. Restroom Addition **\$8,000**
8. ADA Ramp **\$2,000**
9. Sidewalks **\$2,000**

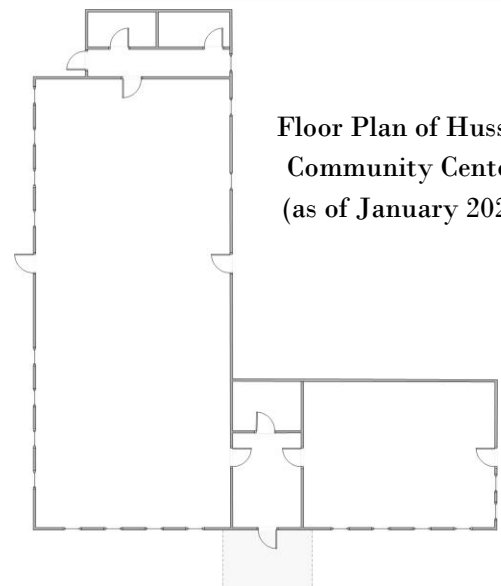
Phase 3 starts with the addition of an ADA compliant restroom. The current restrooms will be removed prior to the elevation and leveling, and a bigger, more modern restroom will be added later, along with an ADA ramp and sidewalks. At the completion of this phase, the building will officially be usable!



TOTAL PROJECT \$100,000



Husser School, by Connie Hanna



Floor Plan of Husser Community Center (as of January 2021)